



KS4 OPTIONS BOOKLET



www.stcolmcillescrossgar.org.uk



WELCOME



www.stcolmcillescrossgar.org.uk

This guide is for pupils and parents and provides a summary of course details across the whole Key Stage 4 curriculum. We hope that it will enable all students to make an informed decision when choosing their optional subjects for Key Stage 4.

As a school community our focus is on providing a varied curriculum which will excite our pupils and allow them to create future career pathways. To do this we offer a wide variety of subjects and provide a greater amount of time helping the study body to refine these choices in order to select choices that are appropriate for each individual student. We would ask you to take your time with your child and to think about each subject and the suitability of its content and assessment method for your child.

You will notice that in addition to the variety of subjects of offer we have also provided information regarding the manner in which the subject is assessed. Many subjects are now assessed through portfolio work which pupils complete throughout their two years of study while others are assessed solely by examination at the end of year 11 and 12. Other subjects are assessed by a combination of both and will have an externally marked exam and an extended assignment which is normally completed in year 12. The method of assessment is very important when selecting subjects as some pupils find final examinations very stressful and do not perform as well as expected despite having worked so hard throughout the two years of study. This type of assessment gives a fairer reflection of their efforts. On the other hand, some students do best in final examinations and prefer this method of assessment. By broadening our curriculum choice, we aim to ensure that all our students have the opportunity for success.

Key Stage 4 study has also changed through the provision of traditional GCSE subjects, alternative subjects, and GCSE Equivalent subjects. I appreciate that these can be confusing, but they are designed to reflect the different ways that subjects can now be studied. In BTEC courses all students can achieve A* to E grades. With OCN courses students can achieve up to a GCSE Grade C equivalent result. Alternative courses which include Occupational Studies are studied at Level 2 which are presented as Distinction, Merit and pass which equate to grades A, B and C.

Please use the Parent Teacher Day to talk to each teacher regarding the courses within the booklet, ask questions so that you are happy with the choices that are making and that it is the right choice.

TIMETABLE OF EVENTS



www.stcolmcillescrossgar.org.uk

Additional online resources that students, parents and carers may find helpful.

Careers Service Young Person's Guide: <https://www.nidirect.gov.uk/sites/default/files/publications/careers-service-a-young-persons-guide-PDF-June-2020.pdf>

Parental guide:

<https://www.nidirect.gov.uk/sites/default/files/publications/careers-service-a-parental-guide.pdf>

Subject Choices at Year 10: <https://www.nidirect.gov.uk/articles/subject-choices-year-10>

Career Discovery Questionnaires Year 10s may find it useful to complete: <https://www.nidirect.gov.uk/services/career-discovery-xello-11-19years-old>

Video clip explaining the work of Careers Service: <https://youtu.be/mOPirrw7zI>

GCSE ART & DESIGN



www.stcolmcillescrossgar.org.uk

GCSE in Art and Design gives you opportunities to actively engage in the creative process of art, craft and design to develop as an effective and independent learner. You will have the freedom to explore many art, craft and design skills and processes throughout the two components of this course. You will develop core knowledge, understanding and skills through your own exploratory work and the research of others' work. There will be a focus on drawing as it is fundamental to the creative process in all art, craft and design disciplines. Assessment will take place at the end of your course.

Course details/External Assessment & Weightings:

Component 1 Part A: Exploratory Portfolio (25%)

In **Component 1**, you will experiment in the disciplines of fine art, textiles, ceramics, graphic design, photography, moving image, digital media and 3D design. Throughout Part A you will learn how to use the formal visual elements of art and design, including: colour; line; shape; form; texture; tone; and pattern. Component 1 Part B: Investigating the Creative and Cultural Industries (35%)

In this Component you will build on the knowledge, skills and confidence gained in Component 1 Part A. You will engage with and understand different roles and opportunities in the creative and cultural industries.

Component 2: Externally Set Assignment (40%)

In this Externally Set Assignment you will complete work in response to a stimulus paper released in the final year of course. You will complete at least 20 hours of preparatory work in response to the theme in the paper. You will also produce and complete a final outcome based on your preparatory work within a set period of 10 hours under exam conditions.

COMPONENT	ASSESSMENT DESCRIPTION	WEIGHTING
Component 1 Part A: Exploratory Portfolio Part B: Investigating the Creative and Cultural Industries	Controlled Assessment Portfolio of experimental work Teacher assessed, moderated by CCEA 50 marks (25%) Personal Outcome or Design Solution Teacher assessed, moderated by us 70 marks (35%)	60%
Component 2: Externally Set Assignment	Controlled Assessment Preparatory Work and a Final Outcome Teacher assessed, moderated by CCEA 80 marks	40%

Why Study Art & Design/Career Pathways

You could progress to an A level qualification in Art and Design or Photography and other related courses. You may go on to become a practising artist, designer or architect and contribute to the economy as part of the fast-growing creative and cultural industries. Students of Art and Design develop valuable transferable skills, which are sought after by many colleges and universities, employers and industry leaders. These practical skills and the ability to solve problems and think creatively will be used throughout your life.



In GCSE Photography, students begin the course by completing a series of skills-based projects which includes camera and Photoshop techniques. These projects, with a focus on the Formal Elements, serve to equip students with a basic toolbox of skills which they can use, develop and refine in subsequent projects. Within these projects, they learn how to explore and respond to the work of other photographers, take and edit photographs and learn how to annotate and present their work. The majority of projects are completed digitally, in addition to physical image manipulation work.

Students then choose a theme for their major personal project which takes them through into Year 12, when they start their Externally Set Task (exam) in January of Year 12.

Course details/External Assessment & Weightings:

Component 1: Portfolio of Work 60% (80 marks)

In this portfolio of work students will experiment in **one or more** area(s) of photography, such as; portraiture, location photography, studio photography, experimental imagery, installation, documentary photography, photo-journalism, moving image: film, video and animation and fashion photography.

Component 2: Externally Set Assignment 40% (80 marks)

In this Externally Set Assignment students will complete work in response to a stimulus paper released in the final year of the course. Students will complete at least **20 hours** of preparatory work in response to the theme in the paper. They will also produce and complete a final outcome based on their preparatory work within a set period of **10 hours** under exam conditions.

COMPONENT	ASSESSMENT DESCRIPTION	WEIGHTING
Component 1 Portfolio of Work 60% (80 marks)	Controlled Assessment Portfolio of work Teacher assessed, moderated by AQA 80 marks	60%
Component 2: Externally Set Assignment	Controlled Assessment Preparatory Work and a Final Outcome Teacher assessed, moderated by AQA 80 marks	40%

Why Study Art & Design: Photography/Career Pathways

Students can progress to an A level qualification in Art and Design or Photography and other related courses. They may go on to become a practising photographer, artist, designer or architect and contribute to the economy as part of the fast-growing creative and cultural industries. Students of Photography develop valuable transferable skills, which are sought after by many colleges and universities, employers and industry leaders. These practical skills and the ability to solve problems and think creatively will be used throughout life.



This course takes a 'hands-on' approach to learning about carpentry and joinery leading to an award under the National Qualifications Framework (NQF)

This course gives students the opportunity to sample work-related learning within an occupational context. Through it they will have the opportunity to learn for work, through work and about work with real outcomes that will give them their skills for life. It will also help develop skills in Literacy, Numeracy and ICT. It should also prepare learners to make informed decisions about further learning opportunities and careers.

Course Details:

Unit 1 provides vocational skills in **Carpentry** and **Joinery** as follows:

- Health and Safety with respect to workshop activities;
- The appropriate use of basic carpentry and joinery hand tools;
- Construction of a range of carpentry and joinery models/projects incorporating a range of joints and jointing methods;
- A review and evaluation of performance.

Unit 2 provides increased vocational skills in **Bench Joinery** and associated activities.

- Health and Safety with respect to workshop activities;
- The appropriate use of an increased number of carpentry and joinery hand tools and basic hand held power tools;
- Basic techniques of cutting, jointing, boring and planning to produce construction related components;
- Construction of a range of bench joinery models.

External Assessment & Weightings:

Assessment is based on the following objectives. Learners must:

Recall knowledge and understanding of the specified content.

Apply knowledge, understanding and skills through practical relevant tasks.

Analyse and evaluate their working making judgements about their performance, indicating where improvements could be made.

Assessment is based on practical assignments and leads to the award of either, Entry Level, Level 1 or Level 2 provided both units are completed. Level 1 equivalent G-D. Level 2 equivalent C-A*.

Why Study Construction/Career Pathways

This course does not provide a basis for further study at A-Level, however it is an excellent entry route into many level 3 courses and apprenticeships.

Joiner, Carpenter, Plumber, Mechanic, Electrician, Contractor, Quantity Surveyor, Site Engineer, Roofer, Contractor, Drafts Person, Architectural Technician.



Through studying GCSE Business Studies, students gain business knowledge, understanding and skills. They begin to understand current events in local, national and global contexts. They learn how to use relevant terms, concepts and methods effectively to describe business and economic behaviour. Students also consider business ethics and the impact of business on the environment.

Course Details/External Assessment & Weightings:

Unit 1:	Starting a Business	40%
	Creating a Business, Marketing, Business Operations	
	External written examination 1 hour 30 mins–End of Year 11	
	Short structured questions and extended writing	
Unit 2:	Developing a Business	40%
	Human Resources, Business Growth, Finance	
	External written examination 1 hour 30 mins–End of Year 12	
	Short structured questions and extended writing	
Unit 3:	Planning a Business (synoptic)	20% Controlled Assessment Task
	Business Plan	
	Completed in Year 12	

Pupils' progress will be assessed at regular intervals via a series of class tests and homework

Why Study Business Studies/Career Pathways

Business is a word that covers a tremendous range of commercial and management careers. Within business, employees can move into areas such as personnel work, production, research, sales, marketing, purchasing, public relations, advertising, banking, finance, insurance, accountancy and so on.

A GCSE in Business Studies will give pupils the opportunity to explore and develop their understanding of the business world. It seeks to equip pupils with a sound vocational knowledge base and to encourage the development of critical judgement, sound reasoning and an analytical approach to problems.

The OCN NI Level 2 in Business Studies enables learners to develop the knowledge, understanding and key skills required to work within a business setting. These qualifications provide an engaging, practical, and relevant introduction to the world of business today.

Course Details:

Pupils will complete a variety of the following units:

- Business Aims and Objectives
- Business Growth
- Develop, Implement and Review a Marketing Plan
- Developing a Business Plan
- Health and Safety for Business
- Market Research and Market Segmentation
- Marketing Mix and Competition
- Understanding Enterprise and Entrepreneurial Skills
- Understanding Motivation in the Workplace
- Understanding Sources of Finance and Cash Flow

External Assessment & Weightings

To achieve the OCN NI Level 2 Certificate in Business Studies the learner must successfully complete a total of 15 credits. This equates to 7-8 units over two years.

Assessment: Portfolio of work completed over the two years.

Why Study Business Studies?

Studying Occupational Studies will lead you into administration jobs within a business setting. These include; receptionist, secretary and general office administration.

Studying GCSE Child Development will allow students to develop the knowledge, understanding and skills (including practical skills) required for working in the area of child development. Students will have the opportunity to engage actively in studying child development to develop as an effective and independent student.

Students will complete one examination in year 11 and one in Year 12. Controlled assessment is worth 40% this is also completed in year 12.

Course Details:

Unit 1: **Parenthood, Pregnancy and the New-born Baby**

Students will learn about the responsibilities of parenting, the development of a healthy pregnancy, the stages of labour and the arrival and care of a new-born baby.

Unit 2: **The Development of the Child (0-5 years)**

Students will learn about the needs of a child and the importance of all aspects of a child's health and development from 0-5 years.

Unit 3: **Investigation Task**

Students carry out a task that develops unique transferrable skills. They choose one task title from a choice of two and research it. They plan and carry out activities to produce an outcome and must evaluate all aspects of the task.

External Assessment & Weightings:

Unit 1:	Year 11 Examination	30% (Year 11)
Unit 2:	Year 12 Examination	30% (Year 12)
Unit 3:	Controlled Assessment	40% (Year 12)

Why Study GCSE Child Development/Career Pathways:

Teaching Assistant/Play Therapist/Play Group Leader/Child Psychologist/Midwife/Teacher



This comprehensive and innovative course encourages students to develop a personal interest in drama. Students choose one of two pathways—performance (acting), or design (costume, lighting, multimedia, set or sound). They work creatively with others, generating, developing and communicating their ideas and explore social, historical and cultural influences on drama texts and activities.

Course Details: OCN NI Level 2 Certificate in Creative Arts and Digital Technologies

Are you passionate about the creative arts and digital technologies? Do you want to develop practical skills in music, drama, media, or digital design? The **OCN NI Level 2 Certificate in Creative Arts and Digital Technologies** offers an exciting opportunity for students to explore their creative potential while gaining a recognised qualification.

Please note- this course is the equivalent of a Grade C at GCSE level.

Course Overview

This course is designed to provide students with hands-on experience in a variety of creative and digital disciplines. It combines practical activities with coursework, allowing students to develop their technical abilities and artistic expression. Assessment is **100% coursework-based**, meaning there are no exams.

What Will You Learn?

The course covers a range of modules that can be tailored to suit individual interests and strengths. Some potential areas of study include:

- **Performing Arts** - Acting, music performance, or stagecraft
- **Digital Media** - Photography, film-making, or animation
- **Music Technology** - Digital music production and sound editing
- **Graphic Design** - Digital illustration and branding
- **Creative Writing** - Scriptwriting and storytelling for media

Who Is This Course For?

This course is ideal for students who enjoy creative subjects and prefer practical, project-based learning. It is particularly suited to those considering careers in the creative industries, including theatre, film, music production, digital marketing, or media design.

Why Study Creative Arts & Digital Technologies/Career Pathways

Upon successful completion, students can progress to Level 3 qualifications in Performing Arts, Media, Music, or Creative Digital Technologies, Further education courses in related fields, Apprenticeships or entry-level roles in the creative sector.

If you love bringing ideas to life through performance, media, or design, the **OCN NI Level 2 Certificate in Creative Arts and Digital Technologies** is the perfect choice for you!

This comprehensive and innovative course encourages students to develop a personal interest in drama. Students choose one of two pathways—performance (acting), or design (costume, lighting, multimedia, set or sound). They work creatively with others, generating, developing and communicating their ideas and explore social, historical and cultural influences on drama texts and activities.

Course Details: Eduqas GCSE Drama

Component 1 Devised Performance 40%

- You will participate in the creation, development and performance of a piece of devised theatre.
- You will produce a portfolio of supporting evidence based on the rehearsal process A performance lasting between 5-16 minutes (depending on the number of actors in your group)
- You will produce an evaluation of the final performance or design. Teacher assessed, and externally moderated

Component 2: Performing from a Text 20%

- You will study two extracts from the same text chosen by you or your teacher. You can choose to be assessed on acting or design.
- You will produce: A performance lasting between 5-14 minutes using sections of text from both extracts. Externally assessed by a visiting examiner

Component 3: Interpreting Theatre 40% Written examination: 1 hour 30 minutes

- You will answer: Section A: Set Text - A series of questions based on the set text that you have studied.
- Section B: Live Theatre Review - One question from a choice of two, analysing and evaluating a given aspect of a live theatre production seen during the course. Externally assessed examination

What does GCSE Drama involve? The GCSE Drama specification is designed to give you a broad and balanced experience of Drama. You will be given the opportunity to develop not only your performance skills but also your design skills in areas such as: Lighting design Sound design Set design Costume, Hair and Make-Up Design You will collaborate in devising your own piece of theatre and perform in a performance from a text. You can choose to concentrate on acting or design. You will explore a range of texts and view a variety of live theatre productions. The Eduqas GCSE Drama specification has three components: Devising Theatre, Performing from a Text, and Interpreting Theatre.

Why Study GCSE Drama/Career Pathways:

- You'll develop a wide range of skills.
- You'll gain confidence and have fun.
- You'll learn to work within a team and balance a range of ideas.
- You'll have a mix of practical and written work unlike any other subject.

In today's technological world, digital technology is an important and worthwhile qualification. No matter what you decide to do when you leave school, the chances are you will end up working with digital technology. This qualification will help you to understand more about how and why digital technology operates in the way it does.

So whether you're looking at heading towards business studies, fashion, engineering, graphic or game designing, health or the environment, you will need to know how ICT works and the impact it has.

At St. Colmcille's, we offer the multimedia route that includes the core of understanding the workings of Excel spreadsheets, Access applications and PowerPoint presentations, to learning the world of HTML coding.

GCSE Digital Technology will get you ready for your next steps, whether that may be college, university or employment.

Course Details/External Weightings and Assessment :

Unit 1:	Compulsory Core Digital Technology (Year 11)	1hr Theory Exam	30%
Unit 2:	Digital Authoring Concepts (Year 12)	1hr30 Theory Exam	40%
Unit 3:	Digital Authoring Practice (Year 12)	Controlled Assessment	30%

Why Study Digital Technology/Career Pathways:

Digital technology incorporates aspects of computer science and information technology. It explores how we can use technology to create, store, process, analyse and present information in a digital context. This includes computer architecture, networks, web technology, digital media, programming tools and software applications.

English Language is a compulsory subject at GCSE level. Through studying GCSE English Language students develop a range of key skills required for life and work. The key skills of Writing, Reading for Understanding (Explain, Analyse, Evaluate) as well as Speaking and Listening are assessed in the course. The skills required for the examination have been developed since Year 8, so all students have the capacity to succeed in this subject. The skills developed in this subject are required and are transferrable to all other subject areas.

Course Details/External Assessment & Weightings:

Terminal Examination: 2 papers (Single Tier Entry) 60%

Unit 1: Writing for Purpose & Audience; Reading Non-Fiction & Media Texts 30%

Unit 4: Personal or Creative Writing; Reading Literary & Non-Fiction Texts 30%

Controlled Assessment: 40%

Unit 3: The Study of Spoken & Written Language 20%

Unit 2: Speaking and Listening 20%

Why Study GCSE English Language/Career Pathways

All courses at post 16 level, require a Grade C or above at GCSE level. All future employers will also ask for evidence of a C grade or above in GCSE English Language.

There is a very strong connection between both courses, so that students can get an additional GCSE qualification by applying the same skills across both subjects. Studying GCSE English Literature allows students to closely study novels, poems and plays which they would not otherwise have studied and generate a love for reading and the theatre.

Course Details/External Assessment & Weightings:

Students selected for English Literature will follow the GCSE English Language course outlined previously as well as the content for GCSE English Literature outlined below:

The scheme of assessment consists of:

TERMINAL EXAMINATION:	2 Papers (Single Tier Entry)	80%
Unit 1:	Study of Prose	30%
Unit 2:	The Study of Drama and Poetry	50%
CONTROLLED ASSESSMENT:		
Unit 3:	The Study of Shakespeare	20%

Why Study GCSE English Literature/Career Pathways

Journalism, Television Production, Marketing, Law, Teaching and English Literature.

GCSE French develops students' enthusiasm for the language while increasing their confidence in the four key skills of listening.

Course Details:

Three Contexts for Learning:

1. Identify, Lifestyle and Culture
2. Local, National, International and Global Areas of Interest
3. School Life, Studies and the World of Work

Using French across the range of contexts to:

- Understand and respond to different types of spoken language;
- Communicate and interact effectively in speech;
- Understand and respond to different types of written language
- Communicate in writing

External Assessment & Weightings:

Four Assessment Objectives (all Summer Year 12)

Speaking 25%

One teacher-conducted and externally marked examination

Listening 25%

Foundation or Higher Tier - external written examination with stimulus material in French

Reading 25%

Foundation or Higher Tier - external written examination with stimulus material in French

Writing 25%

Foundation or Higher Tier - external written examination

Why Study GCSE French

A GCSE in French helps to equip students with transferable skills such as teamwork, problem-solving and independent thinking. These prepare you to succeed in a variety of careers such as business, education and many other professional fields. Students may also choose to progress to GCE French.

Through studying Geography students will follow a broad and worthwhile course of study. They will actively engage to develop enquiring minds and critical thought. Geography helps us to explore and understand space and place in a changing world- recognising the great differences in cultures, political systems, economies, landscapes and environments across the world, and exploring the links between them. They will have the opportunity to apply their learning to the real world through fieldwork and gain confidence in being informed decision makers, a skill essential for future career choices... Geography is, in the broadest sense, an education for life and for living.

Course Details:

Unit 1: Understanding Our Natural World

- Theme A: River Environments
- Theme B: Coastal Environments
- Theme C: Our Changing Weather & Climate
- Theme D: The Restless Earth

Unit 2: Living in Our World

- Theme A: Population & Migration
- Theme B: Changing Urban Areas
- Theme C: Contrasts in World Development
- Theme D: Managing Our Environment

Unit 3: Fieldwork-Including study visit

External Assessment & Weightings:

TERMINAL EXAM	Unit 1:	1 hour 30 minutes	40%	Year 11
	Unit 2:	1 hour 30 minutes	40%	Year 12
	Unit 3:	1 hour	20%	Year 12

Why Study GCSE Geography/Career Pathways:

Education, Agriculture, Surveying, Town Planning, Cartography, GIS specialist. Environment Engineering, conservation, consultancy, climatology, renewable energy.

Through studying Health and Social Care, students will have opportunities to learn about human development and investigate how factors, such as smoking, pollution, income or chronic illness, affect health and well-being. Students also learn about how relationships and major life changes, such as birth of a sibling, starting school, university or work, affect health and well-being. Students develop understanding of the world of work in health, social care and early years' sectors by investigating how the needs of different service user groups are met. Students also learn about a range of job roles in these sectors and discover how practitioners apply the value of care.

Course Details:

Unit 1:

Personal Development, Health and Well-Being—Students investigate human development throughout the life stages and factors affecting health and well-being, including relationships and the impact of major life changes.

Unit 2:

Working in the Health, Social Care and Early Years Sectors—students develop their understanding of the world of work in health, social care and early years' sectors and how different service user groups' needs are met. Students learn about a range of job roles in health, social care and early years' services and how practitioners apply the values of care.

External Assessment & Weightings:

Unit 1:	External assessment in Year 11	50%
Unit 2:	Controlled assessment task in Year 12	50%

Why Study Health and Social Care/Career Pathways:

Studying Health and Social Care opens up a wide range of career paths. These include: Nurse, Social Worker, Physiotherapist, Teacher, Radiographer, Playgroup Manager, Speech Therapist.



Through studying History, students will examine people and events from the past. They will look at how different people view events through the examination of various sources and will make judgements themselves on controversial themes.

Course Details:

Study in Depth: Germany 1933-1945 & Northern Ireland 1965-1998
Outline Study: The Cold War 1945-2003

External Assessment & Weightings:

Paper 1:	Germany 1918-1945	60%
Paper 2:	The Cold War 1945-1991	40%

No Controlled Assessment or Coursework- 100% Written Examinations

<https://ccea.org.uk/downloads/docs/Specifications/GCSE/GCSE%20History%20%282017%29/GCSE%20History%20%282017%29-specification-Standard.pdf>

Why Study History/Career Pathways:

Law, Politics, Business, Marketing, Teaching, Economics, Insurance, Archaeology, Archiving and a range of Public Sector jobs.

Through studying GCSE Hospitality students will develop a core knowledge of the hospitality industry and the skills required for working in it. They will experience the real world of work and develop skills through practical cookery tasks.

Course Details:

Unit 1:

Students will study the diversity of the hospitality industry, its place in the economy, careers and job roles as well as healthy eating, health and safety and first aid.

Unit 2:

Students will study how the hospitality industry meets customers' needs and the importance of customer care. Students will explore the importance of effective communication, marketing and promotions.

Unit 3:

In this practical unit, students will learn how to prepare, present and serve dishes, and work as part of a team to plan and deliver a function or event.

External Assessment & Weightings:

Unit 1:	The Hospitality Industry (one external written examination)	25%
Unit 2:	Hospitality and the Customer (one external written examination)	25%
Unit 3:	Food and Beverage Preparation and Service (controlled assessment)	50%

Why Study Hospitality/Career Pathways:

Dietician, Food Photographer, Estate Agent, Consumer Advisor, Teacher, Working in Health Promotion, Sports Nutritionist, Health Club Worker, Interior Designer, Cook, Chef.

The OCN NI Level 2 certificate in ICT enables pupils to develop key computer based skills. These skills are essential to any career in today's society. Pupils have the opportunity to learn new skills and also to develop skills they already have. The course is delivered through continuous assessment towards a portfolio over 2 years.

Course details

- IT user fundamentals
- Social media
- Using the internet
- Presentation software
- Spreadsheet software

External assessment and weightings

5 units covered over 2 years

Assessment - Portfolio of work submitted at the end of year 12. Level 2, if achieved, is comparable to GCSE grade C.

Why study OCN ICT?

Studying ICT at level 2 provides you with important transferrable life skills and offers numerous opportunities for progression to both further and higher education courses .

CCEA Occupational Studies Maintenance of Land Based Machinery.

This unit is based on the learner developing skills in the maintenance of tractors and/or other horticulture or land based machinery. Learners will have the opportunity to carry out routine safety checks, preparation for operation, routine maintenance and servicing of diesel engines or small petrol engines used for horticulture maintenance.

This unit includes:

- consideration of career opportunities available within agriculture or horticulture machinery maintenance;
- consideration of health and safety issues relating to tractors and other relevant machines;
- consideration of environmental issues relating to working with diesel engines or small petrol engines;
- use of tools and equipment relating to the maintenance of engines;
- the option of either:
 - operating a land-based machine in a safe manner under supervision and within the confines of a controlled environment;
- or
- carrying out basic non-mechanical maintenance on a tractor or other horticulture or land-based machine and attachments; and
- a review and evaluation of performance



Through studying LLW students will research a wide variety of social issues and work-related themes. It is envisaged that life skills applicable to the real world of work will be developed.

Course Details/External Assessment & Weightings:

Unit 1:	Local and Global Citizenship	20%	External Written Exam
Unit 2:	Personal Development	20%	External Written Exam
Unit 3:	Employability	20 %	External Written Exam
Unit 4:	Controlled Assessment Task	40%	

Why Study LLW/Career Pathways:

This GCSE is suited to a wide variety of careers including Health Care, Nursing, the Civil Service and self-employment



Mathematics is an exciting and varied degree that can open up a lot of opportunities for students. The study of mathematics makes you better at solving problems. It gives you skills that you can use across other subjects and apply in many different job roles.

Course Details:

4 Areas of Study:	Number
	Algebra
	Geometry & Measures
	Statistics & Probability

External Assessment & Weightings:

Year 11:	One of module M5/M6/M7 or M8
	Exam Non-calculator (27.5%)
	Exam calculator (27.5%) Total (55%)
Year 12:	One of module M1/M2/M3 or M4 Exam (45%)

Why Study Maths/Career Pathways:

Aspects of Maths will help with most careers and jobs. Most businesses require a C or above at GCSE Maths.



For many years it has been accepted that our educational system must equip young people not only with knowledge to pass examinations but with the skills necessary to cope with everyday life after school. One of the most important life skills is the ability to cope with road and driving conditions as they exist in Northern Ireland today. The loss of young lives is both tragic and largely avoidable. The importance of road safety teaching has been clearly recognised by the listing of the subject within the Education Reform Order (NI) 1989.

Course Details/External Assessment & Weightings:

Unit 1:	Motor Vehicle and Road User Theory	1hr45 Examination	50%
Unit 2:	Investigative Study	Controlled Assessment	25%
Unit 3:	Practical Riding Activity	Controlled Assessment	25%

Why Study Motor Vehicle Studies/Career Pathways:

Engineer, Data Analyst, Medicine, Teacher, Accounting.

Through studying Music students will grow in confidence in performance, both individually and as part of a group boosting their skills in presentation, communication and evaluation. Students will have the opportunity to be creative, writing their own music and learning how to produce their own recording using music software and audio equipment.

Course Details: Eduqas GCSE Music

Component 1: Performing

Total duration of performances: 4-6 minutes

Non-exam assessment: internally assessed, externally moderated 30% of qualification

A minimum of two pieces, one of which must be an ensemble performance of at least one minute duration. The other piece(s) may be either solo and/or ensemble. One of the pieces performed must link to an area of study of the learner's choice.

Component 2: Composition

Total duration of compositions: 3-6 minutes

Non-exam assessment: internally assessed, externally moderated 30% of qualification

Two compositions, one of which must be in response to a brief set by WJEC. Learners will choose one brief from a choice of four, each one linked to a different area of study. The briefs will be released during the first week of September in the academic year in which the assessment is to be taken. The second composition is a free composition for which learners set their own brief.

Component 3: Appraising

Written examination: 1 hour 15 minutes (approximately) 40% of qualification

This component is assessed via a listening examination. Eight questions in total, two on each of the four areas of study.

Area of study 1: Musical Forms and Devices

Area of study 2: Music for Ensemble

Area of study 3: Film Music Area of study 4: Popular Music

Why Study Music/Career Pathways:

The creative industries are currently the fastest growing sector of the economy, creating an increased drive to equip students for the jobs and opportunities of the future. The growth of the screen industries sector here has seen an increased demand for the skills needed to compose, perform and edit music for film, television productions and video games. Studying music can lead to a career as a sound technician, music therapist, teacher or Event Manager. It can also lead to work in film, TV, theatre, radio, arts administration, or creative education. Finally, and perhaps most importantly: students are more likely to succeed and achieve a higher grade if they study something they are good at, and enjoy!

OCCUPATIONAL STUDIES: DESIGN & CREATIVITY - HAIR & BEAUTY



www.stcolmcillescrossgar.org.uk

At St Colmcille's High School we pride ourselves in delivering the highest standard of training and education to give you the skills and confidence to develop a successful career in this exciting industry. We at St Colmcille's ensure our students are trained to deliver the latest treatments in a relaxing environment but also preparing them for the future with a busy salon workload and the professionalism that goes along with this. With class sizes of 6-16 students, you can be sure that you will receive the personalised care and attention to help you succeed.

Course information:

These qualifications are designed to be accessible to a wide range of learners of all abilities. They have been designed to provide a more 'hands-on' approach to learning. What makes them different is that they focus on a particular kind of knowledge, understanding and skills providing the potential for learning in an important 'out-of-school' context.

Pupils will complete 1 unit in Beauty and 1 unit in Hair.

A Level 2 Certificate in Occupational Studies is graded at the same levels as a GCSE A* - C on the National Qualification Framework and a Level 1 Certificate at the same levels as a GCSE D - G on the National Qualification Framework.

Why Study Occupational Studies/Career Pathways:

Around 9000 learners in Northern Ireland achieve Occupational Studies qualifications each year. Around three quarters will progress to training programmes after school. A growing number use the qualifications to go on to:

- Level 2 and 3 qualifications in further education colleges
- sixth form at school
- higher education after age 19.

The BTEC Tech Award in Performing Arts, allows you to not only get the chance to perform, but also develop valuable skills and techniques in different disciplines, and explore potential careers in the industry. This course is equivalent to a GCSE. Do you enjoy musical theatre?

Do you have a passion for:

- Singing?
- Acting?
- Dancing?
- Set/prop design?
- Costume/hair/make-up design?
- Lighting/sound production?

Component 1: Exploring the Performing Arts	Component 2: Developing Skills and Techniques in the Performing Arts	Component 3: Responding to a Brief
The BTEC Tech Award in Performing Arts, allows you to not only get the chance to perform, but also develop valuable skills and techniques in different disciplines, and explore potential careers in the industry.	Students will develop their performing arts skills and techniques through the reproduction of musical theatre repertoire as performers or designers.	Students will be given the opportunity to work as part of a group to contribute to a workshop performance as either a performer or a designer in response to a brief and stimulus.
Portfolio- 30%	Practical- 30%	Group Performance and Portfolio- 40%

Why Study BTEC Performing Arts/Career Pathways

Actor, Teacher, Cinematographer, Production Management/Technician, Event Management, Director, Producer, Theatre Practitioner.

Through studying GCSE Physical Education learners will acquire the knowledge, understanding, skills and values to develop and maintain their performance in physical activities and understand the benefits to health, fitness and well-being. Learners will develop theoretical knowledge and understanding of the factors that underpin physical activity and sport and use this knowledge to improve performance.

Course Details:

Develop theoretical knowledge and understanding of the factors that underpin physical activity and sport and use this knowledge to improve performance.

Understand how the physiological and psychological state affects performance in physical activity in sport tactics, strategies and/or compositional ideas

Develop their ability to analyse and evaluate to improve performance in physical activity and sport

Understand the contribution which physical activity and sport make to health, fitness and well-being

Understand key socio-cultural influences which can affect people's involvement in physical activity and sport.

External Assessment & Weightings:

Component 1:	Exam	60% of qualification
---------------------	------	----------------------

Component 2:	Non-exam assessment	40% of qualification
	3 activities (1 team, 1 individual, 1 other)	

Analysis & Evaluation in 1 of your chosen activities	10%
---	-----

Why Study Physical Education/Career Pathways:

Pupils who take this subject have the opportunity to develop their learning at A-Level. Career opportunities include Physical Education teaching, Physiotherapy, Clinical Exercise Physiologist, Dietician, Exercise Physiologist, Full-time athlete, Outdoor Activity Manager, Performance Analyst and Performance Activity Development Manager.

Through studying GCSE RE students will have the opportunity to develop an enquiring, critical and reflective approach. They explore religions and beliefs, respond personally to fundamental questions and reflect on their own faith and ethical issues relating to society today.

Course Details:

Year 11: The Christian Church with a focus on the Catholic Church:

1. The birth of Christian Church and Christianity in Ireland
2. Church Government
3. Worship in the Catholic Church
4. Sacraments in the Catholic Church
5. The role of the church in contemporary society

Year 12: An Introduction to Christian Ethics:

1. Personal and Family Issues
2. Matters of Life and Death
3. Development in Bioethics
4. Contemporary Issues in Christianity
5. Modern Warfare

External Assessment & Weightings:

Unit 1:	Year 11	External Exam–The Christian Church with a focus on the Catholic Church	50%
Unit 2:	Year 12	External Exam–An Introduction to Christian Ethics	50%

Why Study RE/Career Pathways:

Studying RE at GCSE provides you with important life skills. And offers opportunities in further education and a wide variety of careers, such as: Teaching, Theology, Journalism, Philosophy, Humanities, Psychology, Law, Social Services, Medicine, Occupational Therapy, Computing.

OCN LEVEL 2 CERTIFICATE IN RELIGIOUS EDUCATION



www.stcolmcillescrossgar.org.uk

The OCN NI Level 2 Certificate in Religious Studies enables pupils to develop empathy, respect and awareness of other religious beliefs and cultural diversity as they are applied in everyday life situations. Pupils have the opportunity to examine their own faith practices and those of others in the context of the units provided. The course is delivered through continuous assessment towards a portfolio. This qualification is equivalent to a Grade C.

Course Details:

Pupils will complete the following units:

- Addiction
- Charity and Religious Charities
- Exploring Personal Identity and Faith
- Exploring Religious Traditions within Own Community
- Life and Death Issues
- Life of a Famous Person of Faith
- Marriage and Divorce
- Prejudice and Reconciliation
- World Faith

External Assessment & Weightings:

9 units covered over two years

Assessment: Portfolio of work submitted at the end of Year 12

Why Study OCN Level 2 RE/Career Pathways:

Studying RE at level 2 provides you with important transferable life skills, offers numerous opportunities for progression both further and higher education courses.

SCIENCE DOUBLE AWARD



www.stcolmcillescrossgar.org.uk

In this subject, students will study a range of Biology, Chemistry and Physics topics. Students need to have studied Double Award Science if they intend to study Biology, Chemistry and Physics as an A level General Subject as Post 16.

Course Details:

Biology:	Living Processes & Biodiversity, Body Systems, Genetics, Micro-organism and Health
Chemistry:	Structures, Trends and Chemical Reactions, Further Chemical Reactions and Organic Chemistry
Physics:	Forces & Motion, Energy, Moments & Radioactivity, Waves, Sound & Light, Electricity, Earth and Universe

External Assessment & Weightings:

Year 11:

Three module exams in Biology, Chemistry and Physics	33%
--	-----

Year 12:

Three terminal exams at end of Year 12 Biology, Chemistry and Physics	42%
---	-----

Year 12:

3 Practical Skills—1 per Science Discipline (Booklet A)	7.5%
---	------

Year 12:

3 Terminal Practical Exam papers—1 per Science Discipline (Booklet B)	17.5%
---	-------

Completion of all Higher Tier Grade ranges from A*A*-GG

Completion of all Foundation Tier Grade ranges from C*C*-GG

Why Study Double Award Science/Career Pathways:

Compulsory for Food & Nutrition, Diagnostic Radiotherapy & Oncology, Medicine, Physiotherapy and Science Teaching. Useful for Engineering and Health related Professions.

SCIENCE SINGLE AWARD



www.stcolmcillescrossgar.org.uk

Through studying this subject, student will study a range of topics in Biology, Chemistry and Physics.

Course Details:

Unit 1:	Biology:	Staying Alive, Human Activity & Health
Unit 2:	Chemistry:	Materials and Their Management, Chemical Patterns and Our Environment
Unit 3:	Physics:	Electricity, Waves & Communications, Road Safety, Radio Activity and Earth in Space
Unit 4:	Practical Skills:	2 Tasks in class & Practical Skills Exam Paper

External Assessment & Weightings:

Unit 1, 2 & 3 are worth 25% each	75%
Practical Skills - 2 Tasks (Booklet A)	7.5%
Practical Skills Exam (Booklet B)	17.5%

1 module exam in Year 11

2 module exams in Year 12

Practical Skills task and exam in Year 12

Completion of all Higher Tiers	A*-D/E
Completion of Foundation Tiers	C*-G

Why Study Single Award Science/Career Pathways:

Useful for Education in general, Architecture, Environmental Health, Sport related courses but required for Nursing.



The OCN NI Level 2 Certificate and the OCN NI Level 2 Extended Certificate in Applied Science qualifications will provide learners with the opportunity to develop their knowledge, skills and understanding in a range of key concepts within Biology, Chemistry and Physics and builds upon the Key Stage 3 science curriculum.

These qualifications were developed in conjunction with post-primary schools and offer an applied approach to science. They contain mandatory units in Biology, Chemistry and Physics and a range of optional units.

Individual Units

Life Processes and Living Things	6 Credits
Materials and their Chemical Properties	5 Credits
Physical Processes	6 Credits

Why Study Science/Career Pathways:

Useful for Education in general, Architecture, Environmental Health, Sport related courses but required for Nursing.

Studying Statistics helps students to gain knowledge and understanding of how to gather, analyse, interpret and present data.

It gives students the opportunity to develop their ability to apply their skills to real-life contexts.

Benefits to Students:

It gives students appropriate statistical skills, knowledge and understanding to support their GCSE studies and enable them to progress to further academic and vocational study and to employment.

It gives students opportunities to develop the skills of processing, analysing and representing data and an understanding of which techniques are appropriate in particular situations.

It allows students to develop their ability to interpret and evaluate the outcomes of a statistical enquiry, think critically and communicate their conclusions clearly.

Content and Assessment

CONTENT	ASSESSMENT	WEIGHTINGS	AVAILABILITY
UNIT 1	External written examination Foundation Tier: 1 hour 30 mins or Higher Tier: 2 hours All questions are compulsory	50%	Summer from 2018
UNIT 2	External written examination Foundation Tier: 1 hour 30 mins or Higher Tier: 2 hours Some questions are set on the information in the pre-release case study. All questions are compulsory	50%	Summer from 2019

Why Study Statistics/Career Pathways:

Our qualification in Statistics gives you opportunities to progress further study or the world of work. This specification helps you to develop understanding of how technology enables the collection, visualisation and analysis of large quantities of data to inform decision-making in a variety of organisations including public, commercial, charitable and academic sectors.

The CCEA GCSE Technology and Design specification encourages students to be innovative and prepared to take design risks.

Students explore the creative, engineering and manufacturing industries, as well as the importance of high quality technology and design.

Our GCSE Technology and Design specification provides students with a core of knowledge in the following key areas before they choose to specialise in one:

- electronic and microelectronic control systems
- mechanical and pneumatic control systems
- product design.
-

There are two written exams, each worth 25% of the final mark, and a design and manufacturing project worth 50%. Teachers mark the design project, and we visit centres to carry out moderation.

This qualification builds on the knowledge, understanding and skills developed through the Science and Technology Area of Learning and the Cross-Curricular Skill of Using ICT.

This specification is unitised, so it's possible to take part of the assessment at the end of the first year of study.

The specification has three units:

- **Unit 1: Technology and Design Core Content**
- **Unit 2: Optional Areas of Study**
- **Unit 3: Design and Manufacturing Project.**

Why Study Technology & Design/Career Pathways:

Students develop decision-making skills through individual and collaborative working. They also develop their creativity and critical analysis skills through making links between existing solutions, technological knowledge and the principles of good design.

With this qualification, students may choose to progress to A Level Technology and Design and then to a qualification in engineering, product design or a related area, or the world of work.

OUR VISION



www.stcolmcillescrossgar.org.uk

We promote excellence through providing a caring, supportive environment.
We develop each pupil to their full potential so that together we achieve personal excellence.
We achieve success for all, through co-operation, teamwork and understanding.

Our School Motto is:

Caring, Learning, Achieving, Believing

Composite Aims

- 1 To provide pupils with a broad, balanced educational programme and a happy, secure learning environment in which they can develop to their full potential both academically and socially.
- 2 To create a caring Christian community where self-discipline, self-respect and an appreciation of the needs, talents and contributions of others are seen as essential life-long values.

Academic

- 1 To maximise pupils' innate abilities and talents and develop their self-esteem.
- 2 To provide pupils with a relevant, broad and balanced curriculum which will prepare them for further education and working life.
- 3 To give each pupil experience and evidence of success at a suitable academic level.
- 4 To ensure that all pupils achieve some nationally recognised qualification regardless of academic ability.

Ethical

- 1 To encourage, within a Catholic ethos, high standards of self-discipline and integrity in dealing with others, a pride in oneself, one's appearance and in the school and community.

Pastoral

- 1 To provide a unified whole-school approach for the development of the child as an individual.
- 2 To create an environment for pupils in which they can develop their own personal attributes.
- 3 To promote an awareness of a healthy lifestyle.



There are job opportunities across all occupational areas in Northern Ireland but there is higher demand in occupations relating to Science, Technology, Engineering and Mathematics (STEM).

As the world becomes increasingly technology dependent it is anticipated that the range of businesses emerging around the STEM areas will grow significantly. This will require people to get a good education in STEM subjects.

The following areas are extremely important to the Northern Ireland economy:

- ICT
- Creative and digital media
- Advanced manufacturing and engineering
- Renewable energies and recycling
- Agri food sector
- Health and life science
- Business and financial services

ICT

Information and communications technology (ICT), particularly software development, database development, systems architecture and internet specialist skills, is at the heart of every organisation and is central to our daily lives: mobile communication, computer games, touch screen technology, satellite navigation devices – the list is endless.

Creative and Digital Media

Digital is everywhere and is at the heart of the UK economy, underpinning growth through both the development of new technologies and the provision of services to businesses and consumers. All national trends and forecasts predict the continuation of demand for high level skills in the sector.

Key market growth areas identified by national and international level research include:

Cloud computing

Mobile technologies

Cross-platform mobile applications

Computer games and digital entertainment

Cyber-security products and services

Green/low carbon IT products

Agri-food

Food and drink manufacturing includes the processing of meat and poultry, dairy, fish and shellfish, fruit and vegetables and the production of bakery and drinks products amongst others. Areas of work include bakery, distillery, creamery and ready meals production. Jobs can include:

laboratory technicians
food scientists
biotech

machine operatives
butcher
supply chain manager

The Food and Drink Sector Skills Council's 'Tasty Careers' website and interactive careers map have information on the benefits of a career within the food and drink manufacturing sector. As the largest industry in Northern Ireland, there will be 15,000 potential job opportunities across the food supply chain in the next five years.

Business and Financial Services

There are seven different industries within the finance, accountancy and financial services sector. Jobs vary from:

actuaries and pensions advisers
underwriters
bank officials

accountants
insurance and investment brokers

Advanced Manufacturing and Engineering

This includes careers requiring CAD skills, CNC machine operatives, mechanical and electrical engineering skills including at technician level and strategic marketing to name but a few.

Renewable Energies and Recycling

European and global agreements on more energy efficient technology are creating demand for new engineering solutions. Mechanical engineers are at the forefront of designing everything from better forms of green energy and zero emission engines to the latest breed of nuclear power stations. It's a highly skilled profession but has multiple entry routes. Careers in this sector include:

mechanical engineers
research and development managers
physical scientists

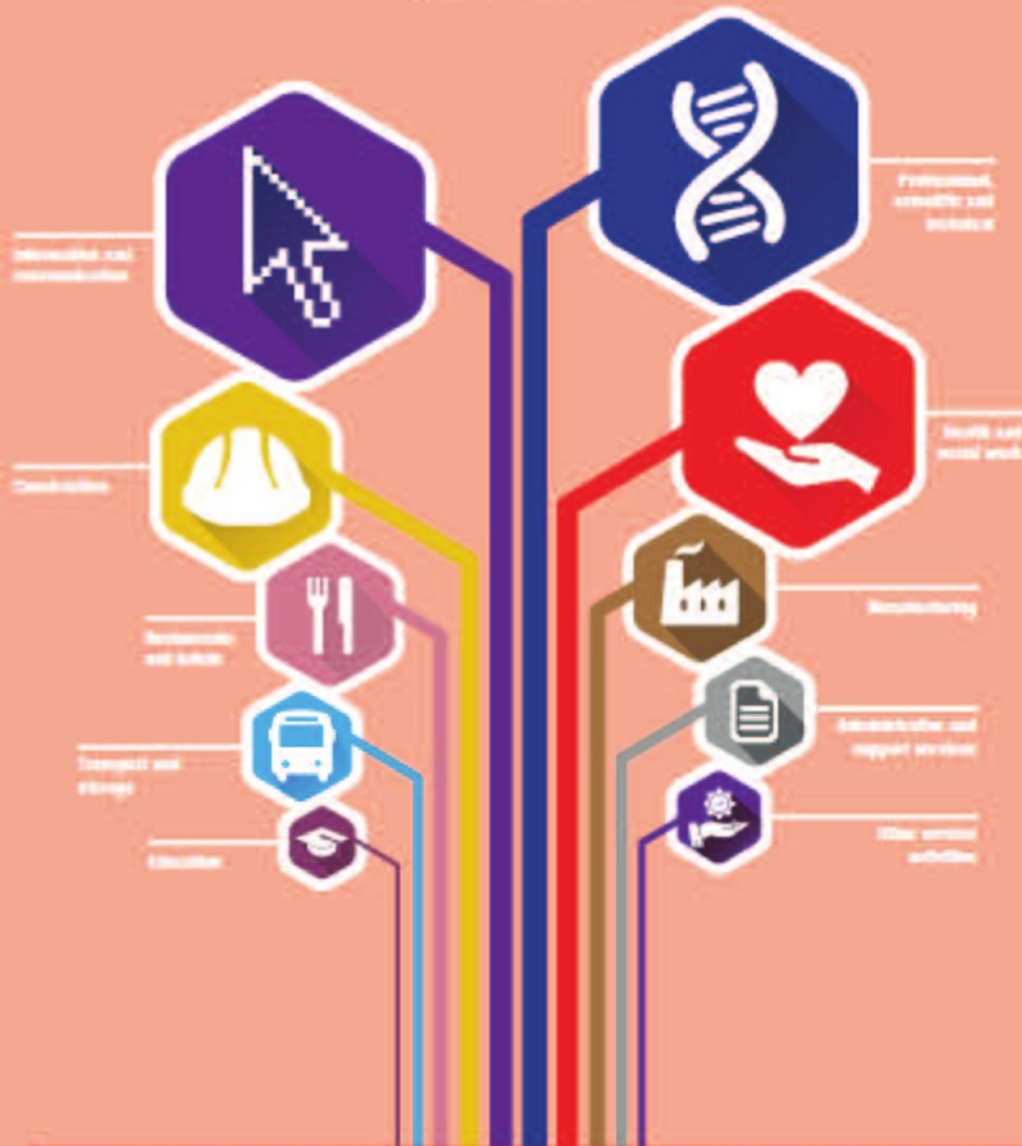
design and development engineers
biological scientists and biochemists

Health and Life Sciences

The Health and Life sciences sector is one of Northern Ireland's most important sectors. The sector combines all elements of science and technology that contribute to the discovery and development of products for the healthcare and wellbeing of humans and animals.

EMPLOYMENT PROJECTIONS

Top 10 growth sectors
(2020-2030)



There will be growth opportunities for all skills levels across a range of sectors - the focus will be predominantly on higher level skills.